

Case No. PAC-E-21-07
Exhibit No. 23
Witness: Timothy J. Hemstreet

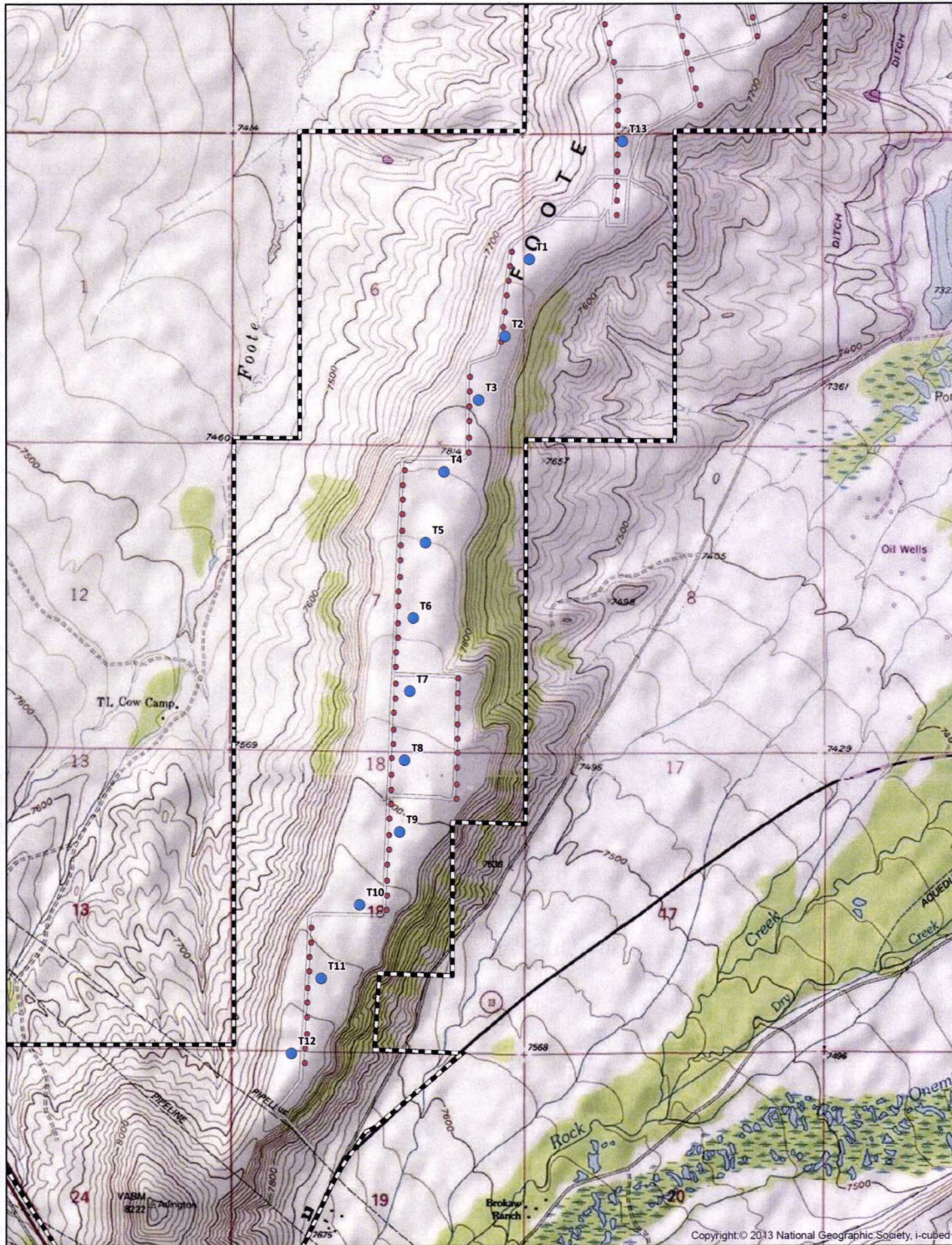
BEFORE THE IDAHO PUBLIC UTILITIES COMMISSION

ROCKY MOUNTAIN POWER

Exhibit Accompanying Direct Testimony of Timothy J. Hemstreet

Site Plan Foote Creek I

May 2021

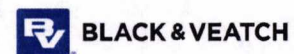
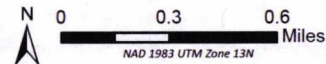


- Turbine Locations (5/17/2019)
- Existing Turbines
- Existing Access Roads
- ▭ Project Boundary



Foote Creek Repowering
 Foote Creek I
 Project Layout

PacifiCorp
 12 June 2019



Copyright © 2013 National Geographic Society, i-cubed